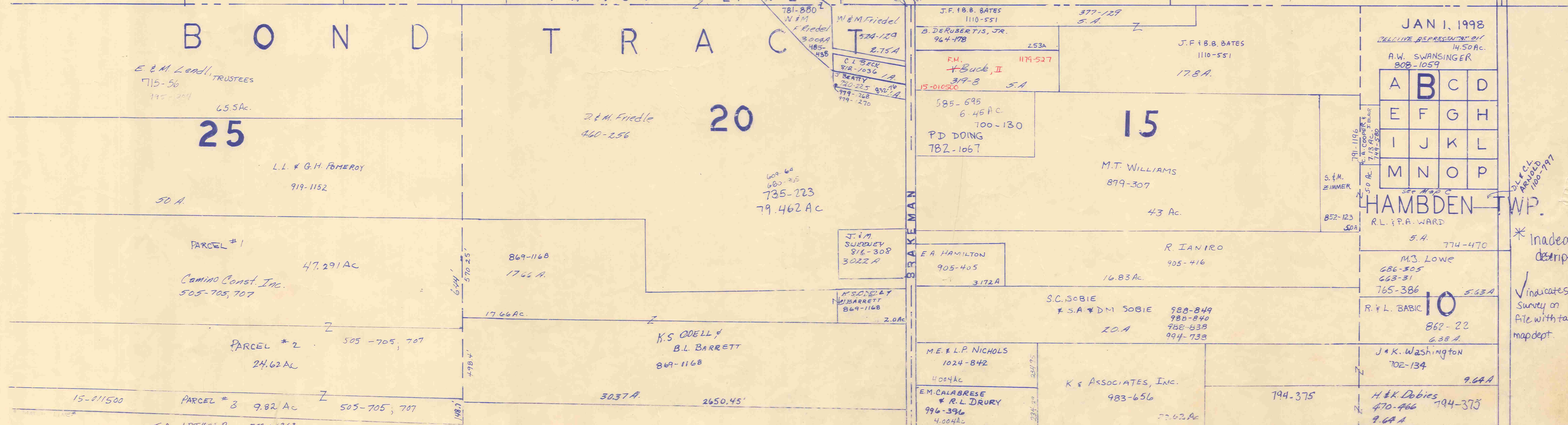
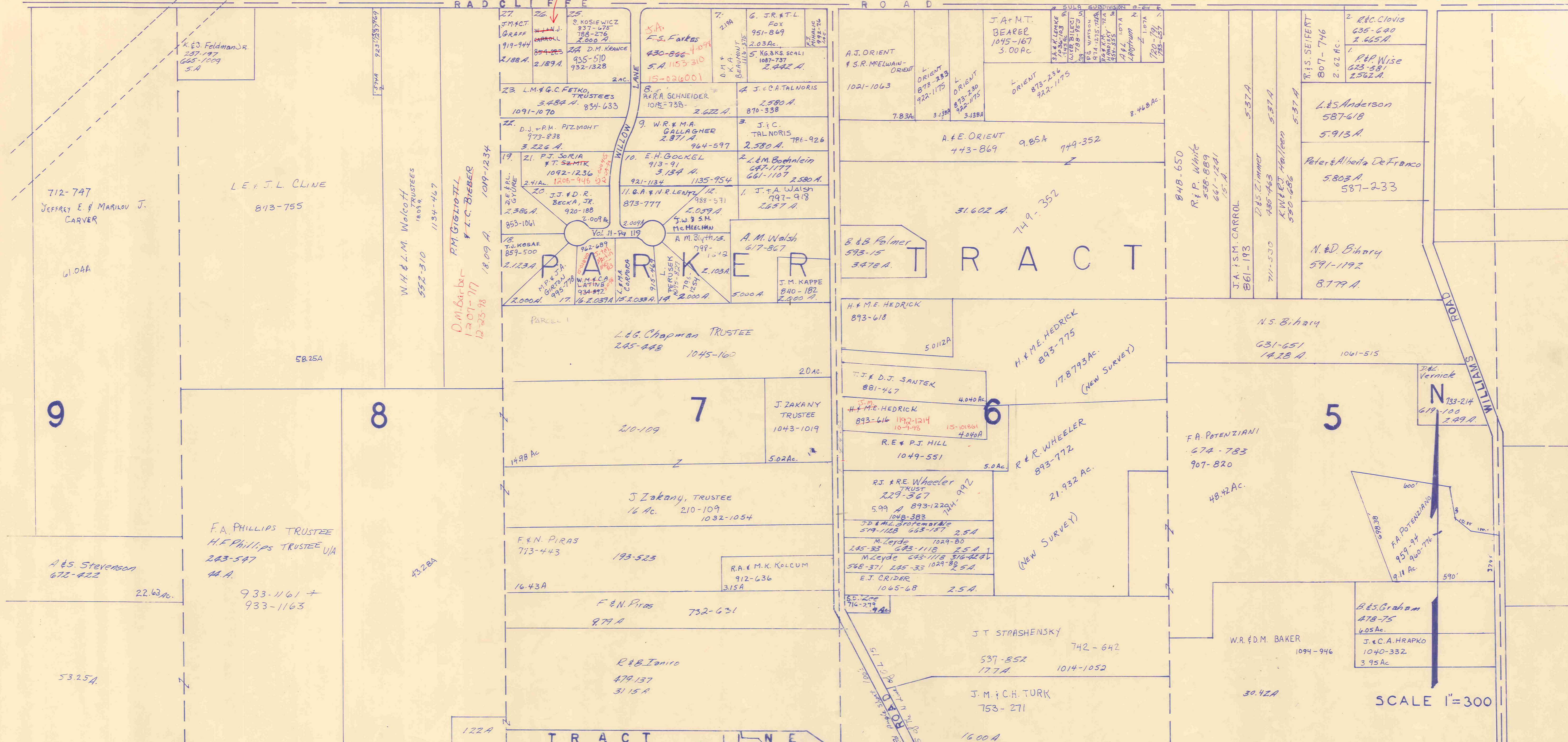






L A K E C O U N T Y



SCALE 1"=300

JAN 1, 1998

DELLINE REPRESENTATION OF A.W. SWANSINGER 308-1059

A	B	C	D
E	F	G	H
I	J	K	L
M	N	O	P

HAMBDEN TWP.

RL. P.A. WARD 5.A. 774-470

M.S. LOWE 686-505 663-31 765-386 5.63A

R. & L. BABIC 862-22 6.38A

J. & K. WASHINGTON 702-134 9.64A

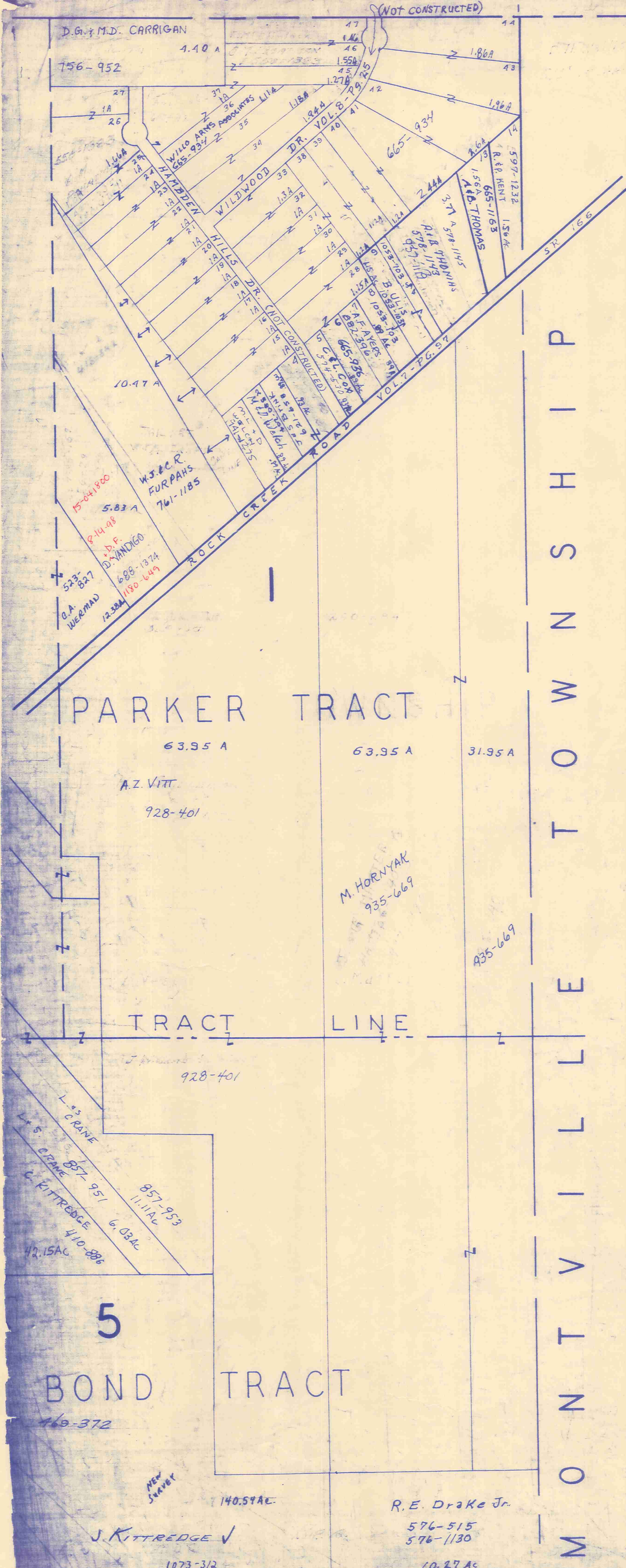
H. & K. DOBIES 470-466 794-375 9.64A

\* Inadequate description  
✓ Indicates survey on file with tax mapdept.



LAKE COUNTY

THOMPSON TWP.



M O N T V I L L E T O W N S H I P



SCALE 1" = 300'  
 JAN. 1, 1908

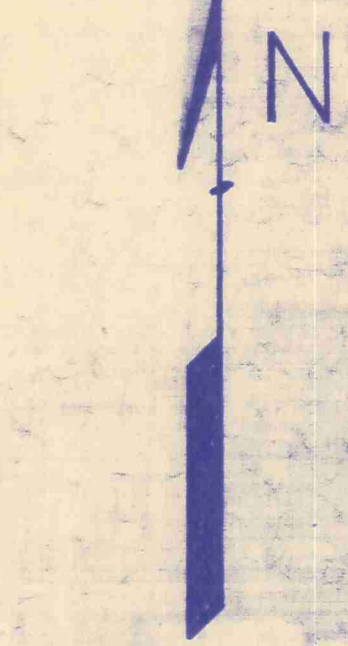
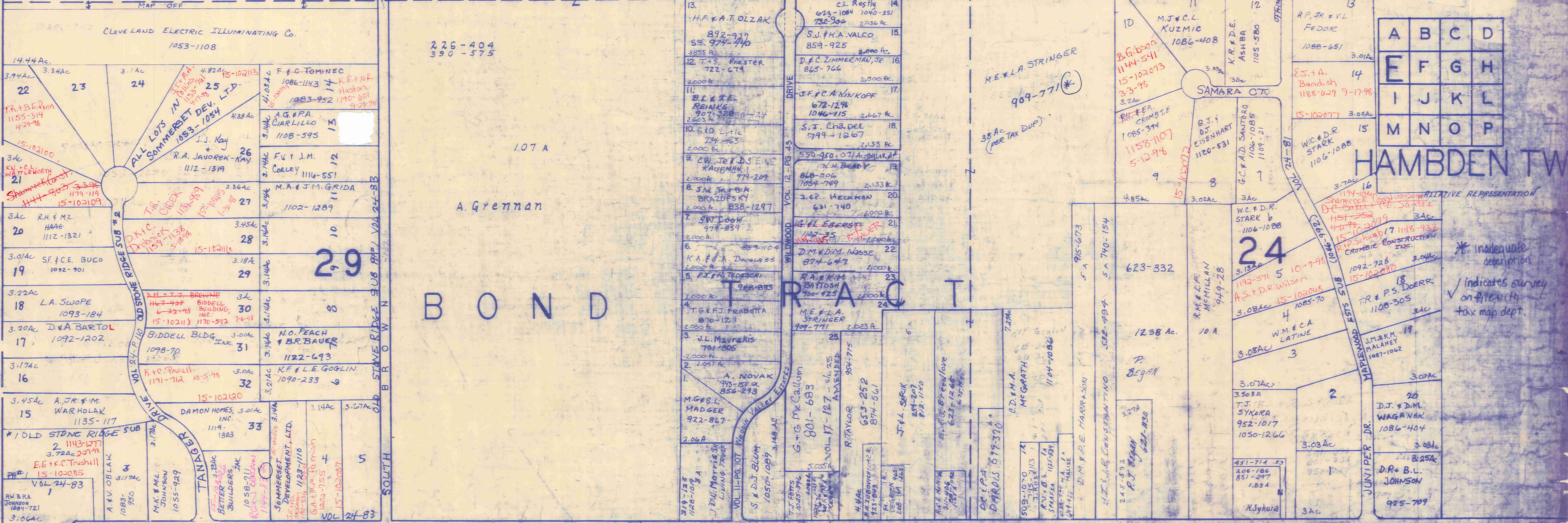
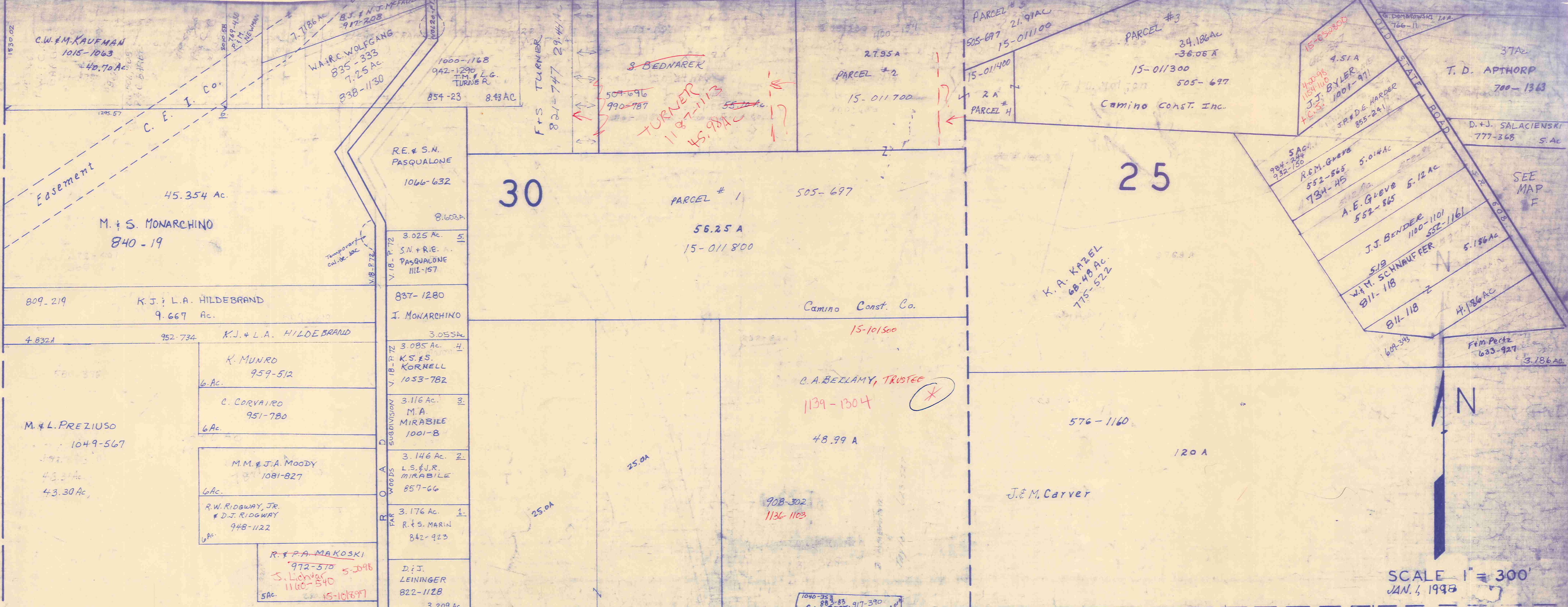
A	B	C	D
E	F	G	H
I	J	K	L
M	N	O	P

HAMB DEN TWP.

RELATIVE REPRESENTATION

✓ indicates survey on file with tax map dept. \* inadequate description

C H A R D O N T O W N S H I P



SCALE 1" = 300'  
JAN. 4, 1998

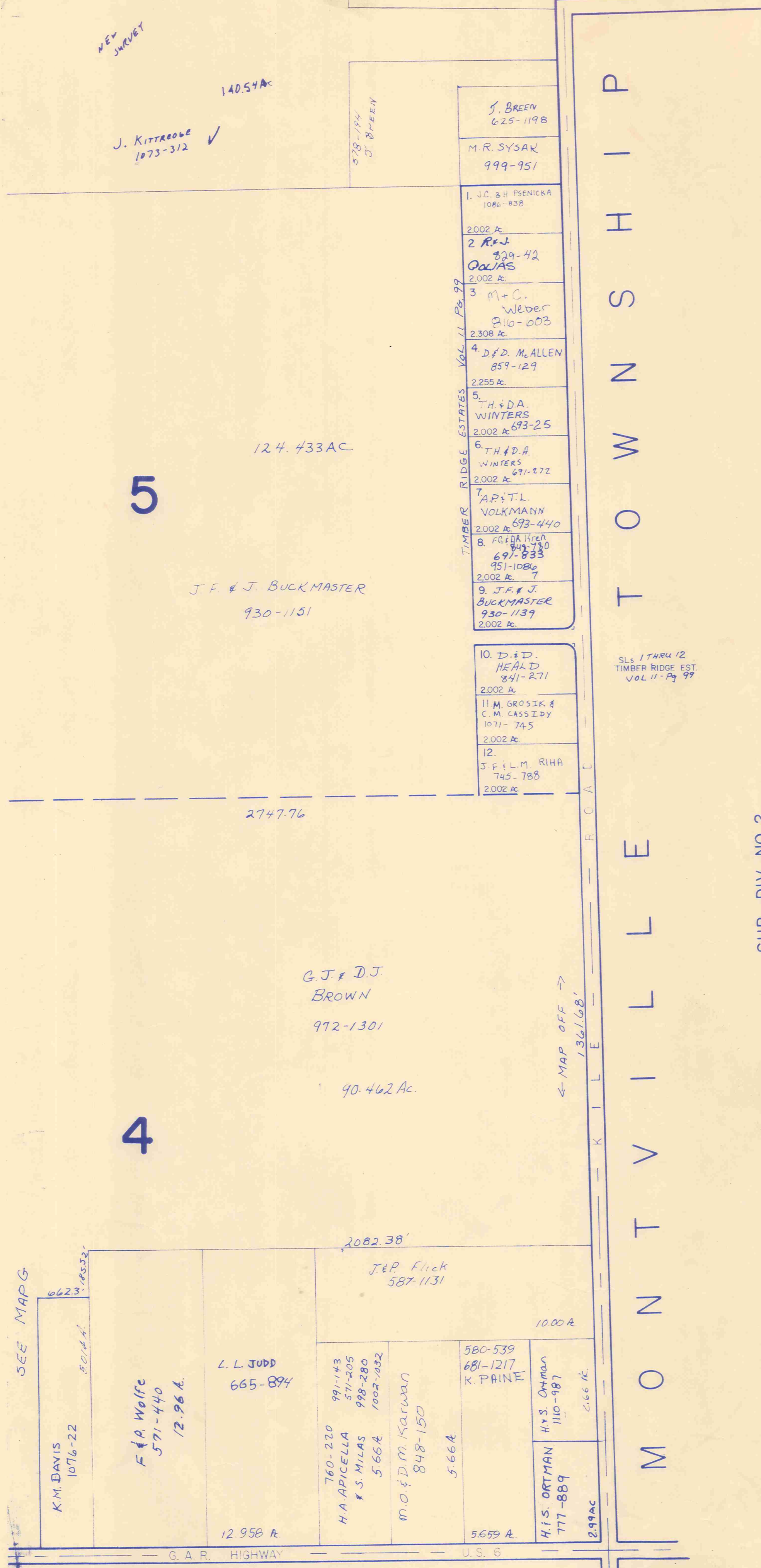
A	B	C	D
E	F	G	H
I	J	K	L
M	N	O	P

HAMB DEN TW

\* inadequate description  
/ indicates survey on file with tax map dept.

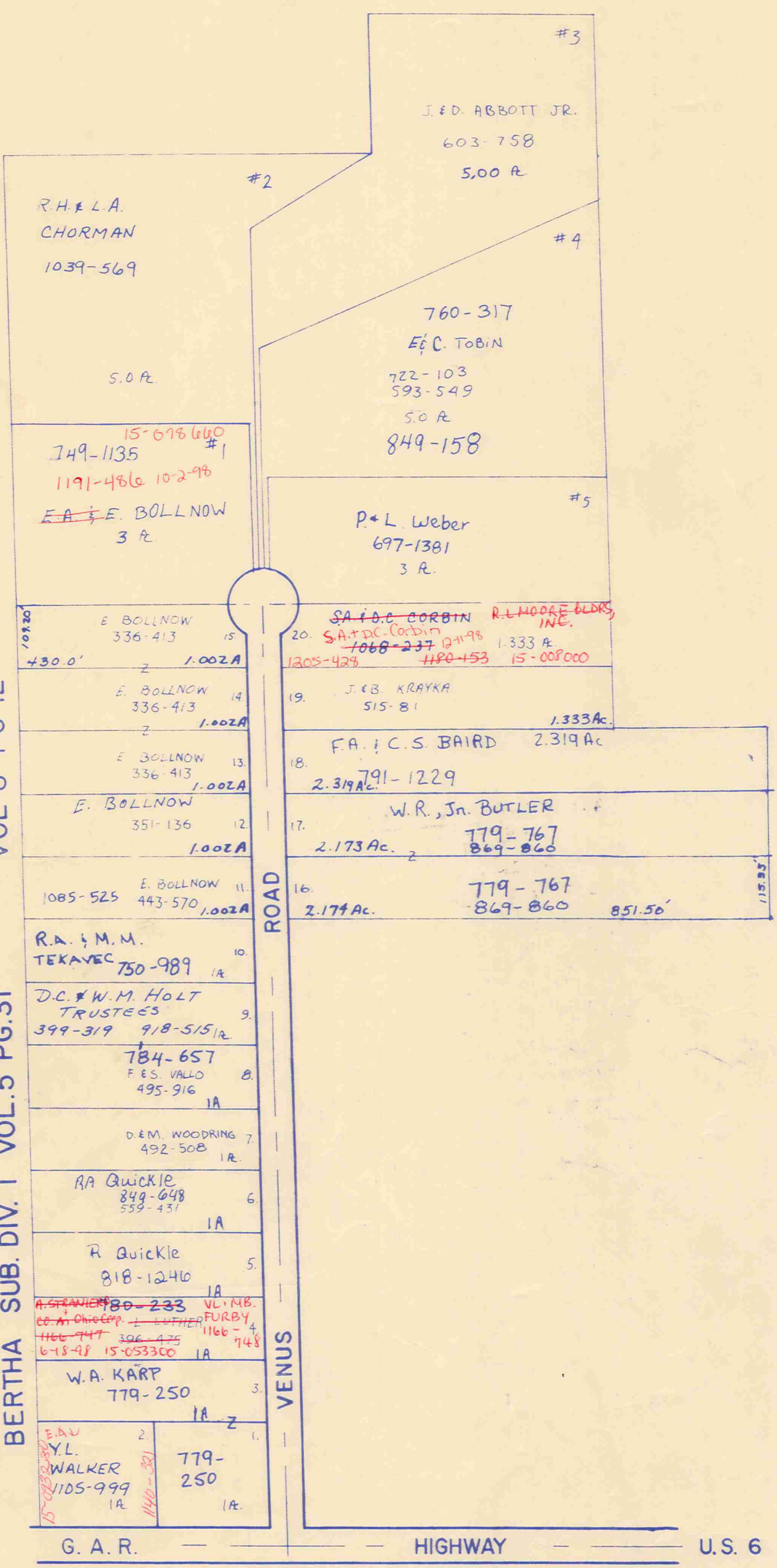




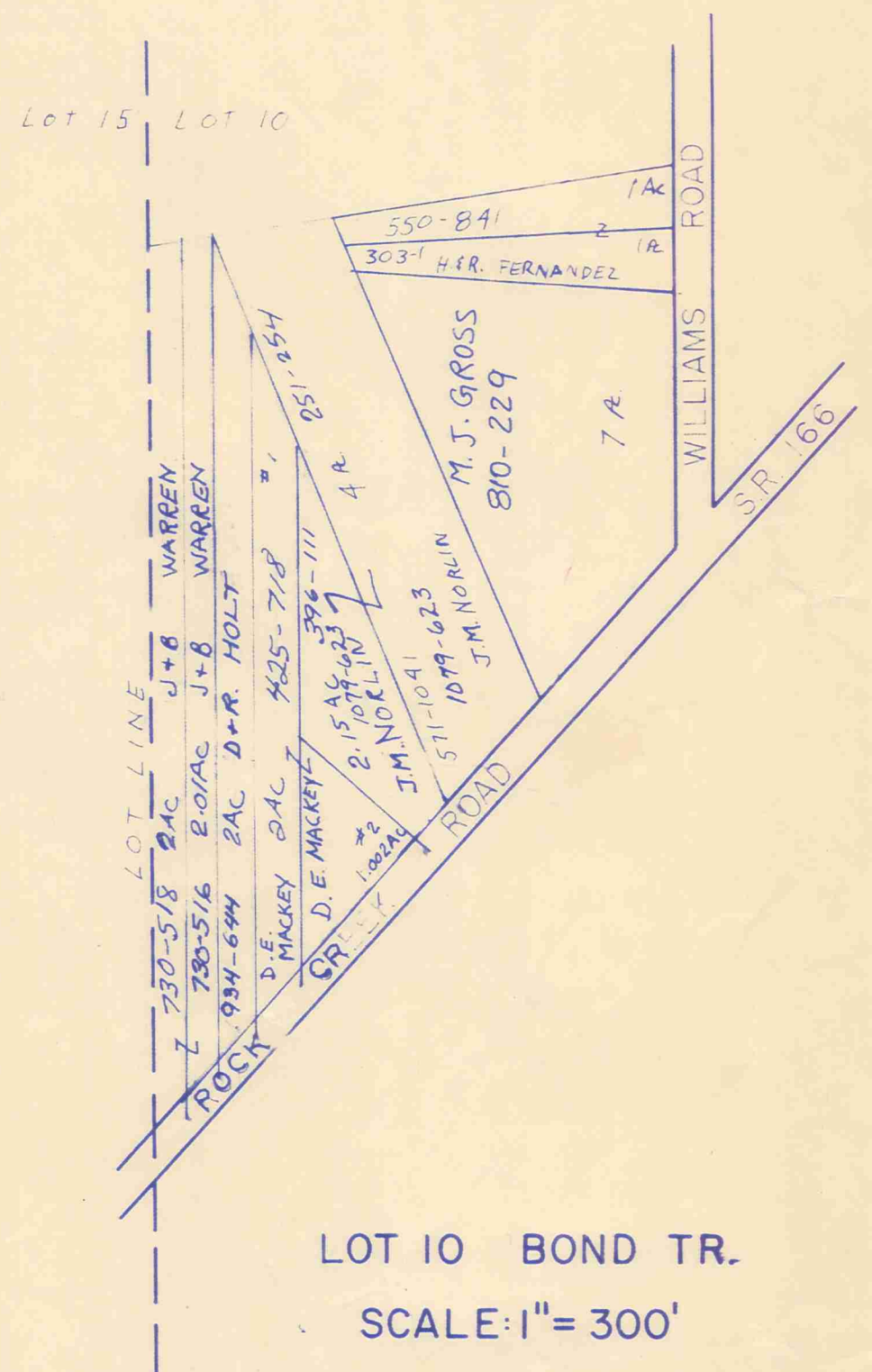


T O W N S H I P  
M O N T V I L L E

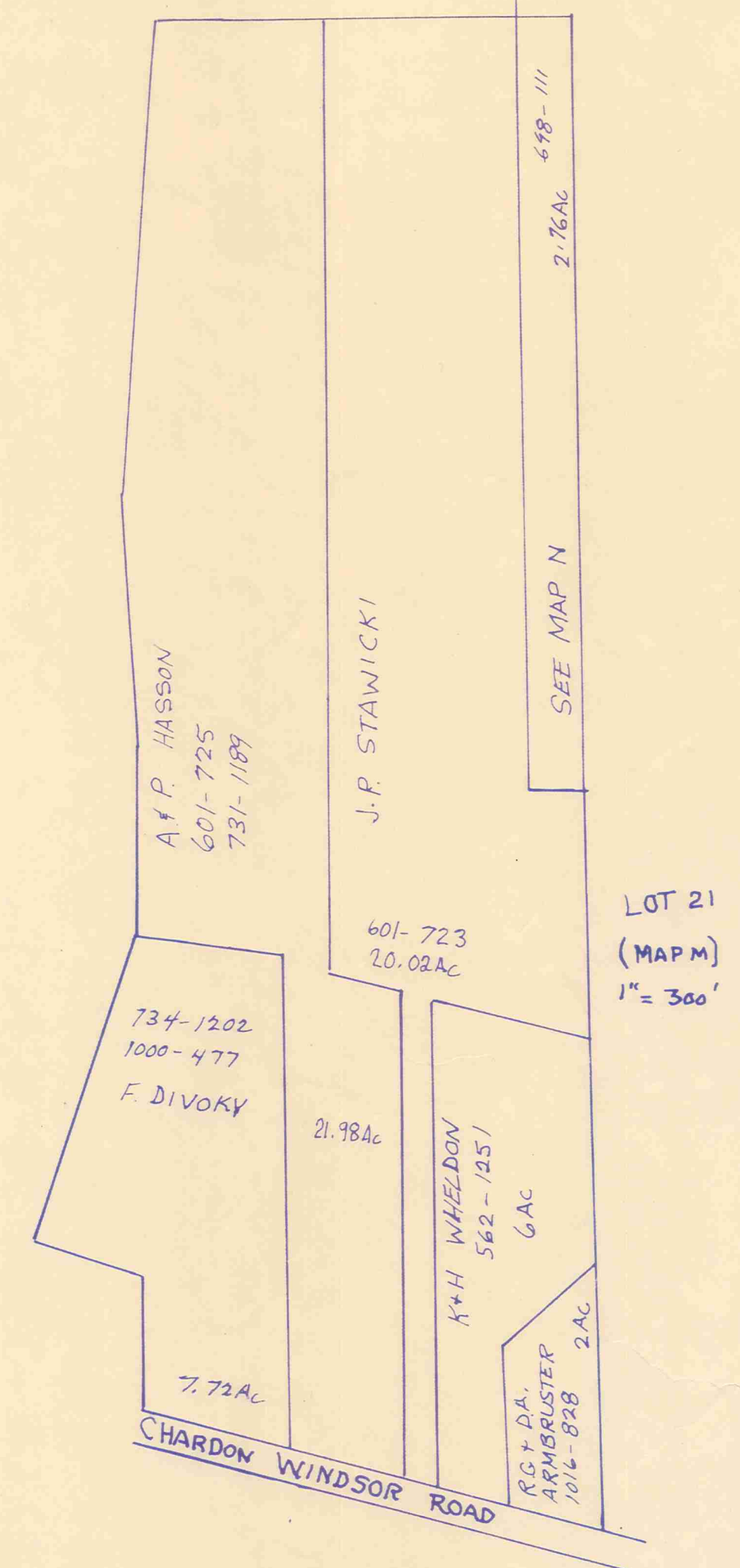
SUB. DIV. NO. 2  
VOL 8 PG 12  
BERTHA SUB. DIV. 1 VOL. 5 PG. 31



LOT 9 & 14 BOND TR.  
SCALE: 1" = 200'



LOT 10 BOND TR.  
SCALE: 1" = 300'



LOT 21  
(MAP M)  
1" = 300'

SCALE 1" = 300'  
JAN. 1, 1998

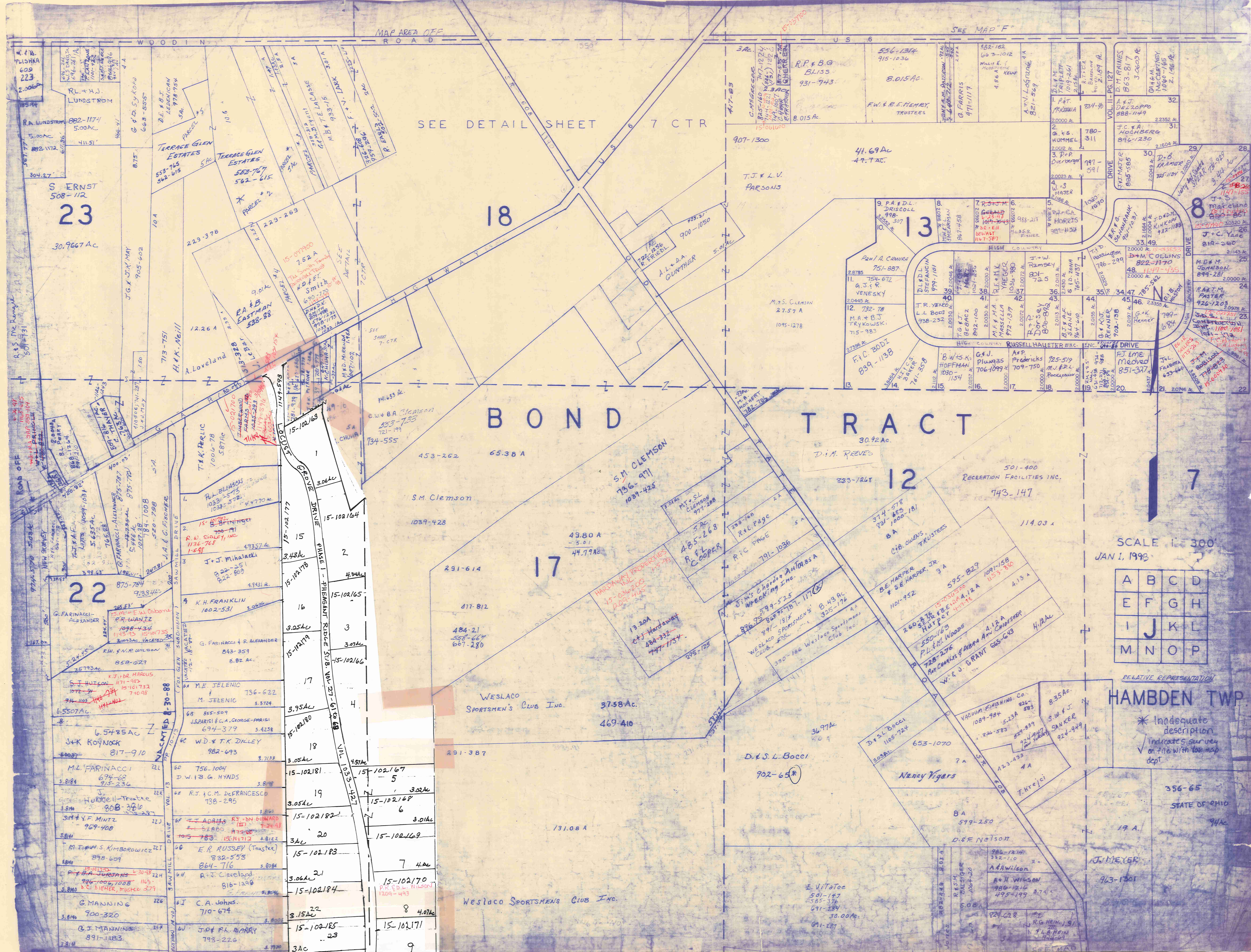
A	B	C	D
E	F	G	H
I	J	K	L
M	N	O	P

**HAMB DEN TWP.**

RELATIVE REPRESENTATION

\* Inadequate description  
✓ indicates survey on file with tax map dept.





SEE DETAIL SHEET 7 CTR

18

23

13

# BOND TRACT

17

12

22

7

SCALE 1" = 300'  
JAN 1, 1992

A	B	C	D
E	F	G	H
I	J	K	L
M	N	O	P

RELATIVE REPRESENTATION

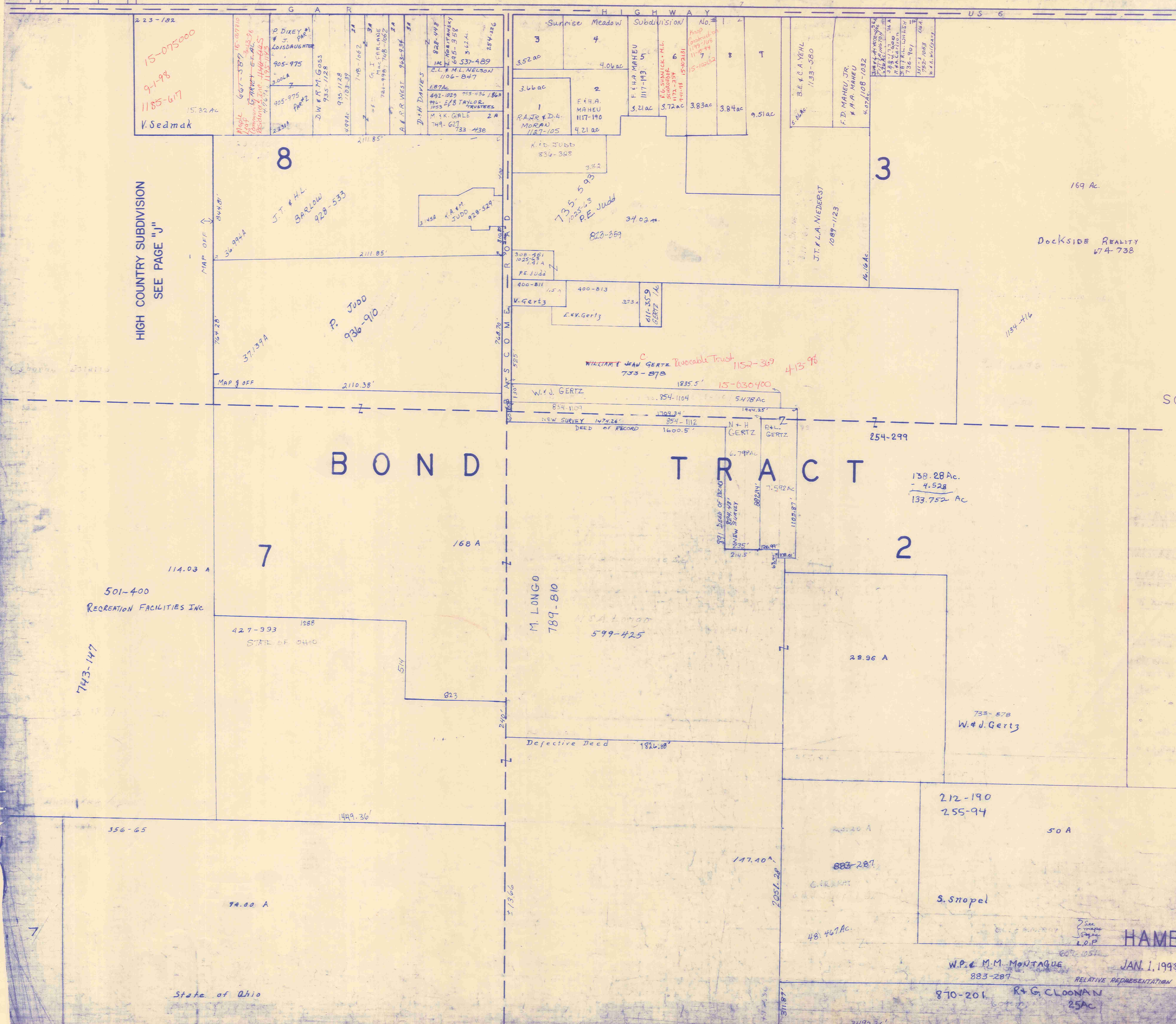
## HAMB DEN TWP

\* Inadequate description indicates survey on file with tax map dept.

STATE OF OHIO

Map containing numerous lot details including owner names and acreages:

- Lot 1: T.K. PERLIC, 1000-78, 5.87 AC
- Lot 2: J. J. Mihalacki, 822-551, 3.94 AC
- Lot 3: K.H. FRANKLIN, 1002-531, 3.05 AC
- Lot 4: G. FARINACCI & R. ALEXANDER, 843-359, 3.07 AC
- Lot 5: M.E. JELENIC & M. JELENIC, 736-622, 3.95 AC
- Lot 6: W.D. & T.K. DILLEY, 982-693, 3.05 AC
- Lot 7: D.S.L. Bocci, 902-65, 36.97 AC
- Lot 8: C.A. Johns, 710-674, 3.15 AC
- Lot 9: J.D. & R.A. BARRY, 793-226, 3 AC
- Lot 10: F.W. & R.E. HENRY, TRUSTEES, 8.015 AC
- Lot 11: S.M. CLEMON, 736-971, 1039-428, 49.80 AC
- Lot 12: RECREATION FACILITIES INC., 743-147, 114.03 AC
- Lot 13: T.J. & L.V. FARSONS, 41.69 AC
- Lot 14: S.M. CLEMON, 736-971, 1039-428, 44.79 AC
- Lot 15: J. J. Mihalacki, 822-551, 3.94 AC
- Lot 16: K.H. FRANKLIN, 1002-531, 3.05 AC
- Lot 17: WESLACO SPORTSMEN'S CLUB INC., 37.58 AC
- Lot 18: W.D. & T.K. DILLEY, 982-693, 3.05 AC
- Lot 19: R.J. & C.M. DEFRANCESCO, 738-295, 3.05 AC
- Lot 20: E.R. RUSSEY (Trustee), 832-553, 3 AC
- Lot 21: A.J. Cleveland, 816-1200, 7.4 AC
- Lot 22: G. FARINACCI-ALEXANDER, 1098-434, 3.81 AC
- Lot 23: G. MANNING, 900-320, 3.81 AC



15-075000  
9-1-98  
1185-617  
V. Sedmak

HIGH COUNTRY SUBDIVISION  
SEE PAGE "J"

8

J.T. & H.L. BARLOW  
928-533

P. Judd  
936-910

BOND TRACT

7

501-400  
RECREATION FACILITIES INC.

743-147

M. LONGO  
789-810

599-425

2

28.96 A

733-878  
W. J. Gertz

✓ indicates survey on file with town map dept.  
\* inadequate description

A	B	C	D
E	F	G	H
I	J	K	L
M	N	O	P

HAMB DEN TWP

W.P. & M.M. MONTAGUE  
883-287

JAN. 1, 1995

870-201 R.G. CLOONAN  
25AC

State of Ohio

SEE MAP L.O.P.



SCALE 1" = 300'

DOCKSIDE REALTY  
674-738

169 Ac.

3

J.T. & L.A. NIEDERST  
1087-1123

P.E. Judd  
820-869

WILLIAM & JEAN GERTE Revocable Trust  
733-878

W. J. GERTZ

NEW SURVEY 147426 DEED OF RECORD

1000.5'

1835.5'

15-030400

5478 AC

1944.35'

6.792 AC

7.592 AC

1102.87'

126.99'

214.5'

1826.10'

Defective Deed

1826.10'

1826.10'

1826.10'

1826.10'

1826.10'

1826.10'

1826.10'

1826.10'

1826.10'

1826.10'

1826.10'

1826.10'

1826.10'

1826.10'

1826.10'

1826.10'

3

169.00 A.

Dockside REALTY  
674-738

1/34-116

BOND TRACT

R O A D  
T O W N  
S H I P  
L L E  
M O N T V I L L E

- 1. \* 826-36 229-504 5A. 229 AC
- 1. T.E. MICCO
- 2. 430-952 4.98 A.
- 2. R. & B. Grant 983-950 ss
- 3. K.S. & K.A. BENA 980-922 874-565 4.98 Ac.
- 4. T.L. & D.L. PLANTON 1093-1102 4.98 Ac.
- 5. R.J. LEISMAN & S. MCCAULEY 1104-531 4.98 Ac.
- 6. R. Kavaras 259-219 4.98 Ac.
- 7. 281-345 460-398 4.98 Ac.
- 7. H. Tomosin 270-459 460-480 844-206 4.98 Ac.
- 8. S.L. & S.M. SPALLER 1108-803 4.98 Ac.
- 9. 424-826 580-177 4.98 Ac.
- 10. A & M. Burnett 477-502 4.98 Ac.
- 11. MARK & ALICE L. HOCAB 726-586 4.98 Ac.
- 12. P.M. & M.A. MALLOY 5.187 Ac.
- 12. 997-287
- 13. 994-852-1288 213-944 3.027 Ac.
- 13. E.J. VARGA 15-001100 852-1286 120-940 3.027 Ac.
- 13. Z. VARGA 15-012000 210-528 4 AC.
- 13. K.M. SCHEUTZOW 15-104119 615.12'
- 14. W.P. & M.M. MONTAGUE 885-287 484.7 Ac.
- 15. R.M. & G.A. CLOVAN 870-201 25 AC.

817-625  
817-627

S. Snopel

(SEE PAGE K, O, P)



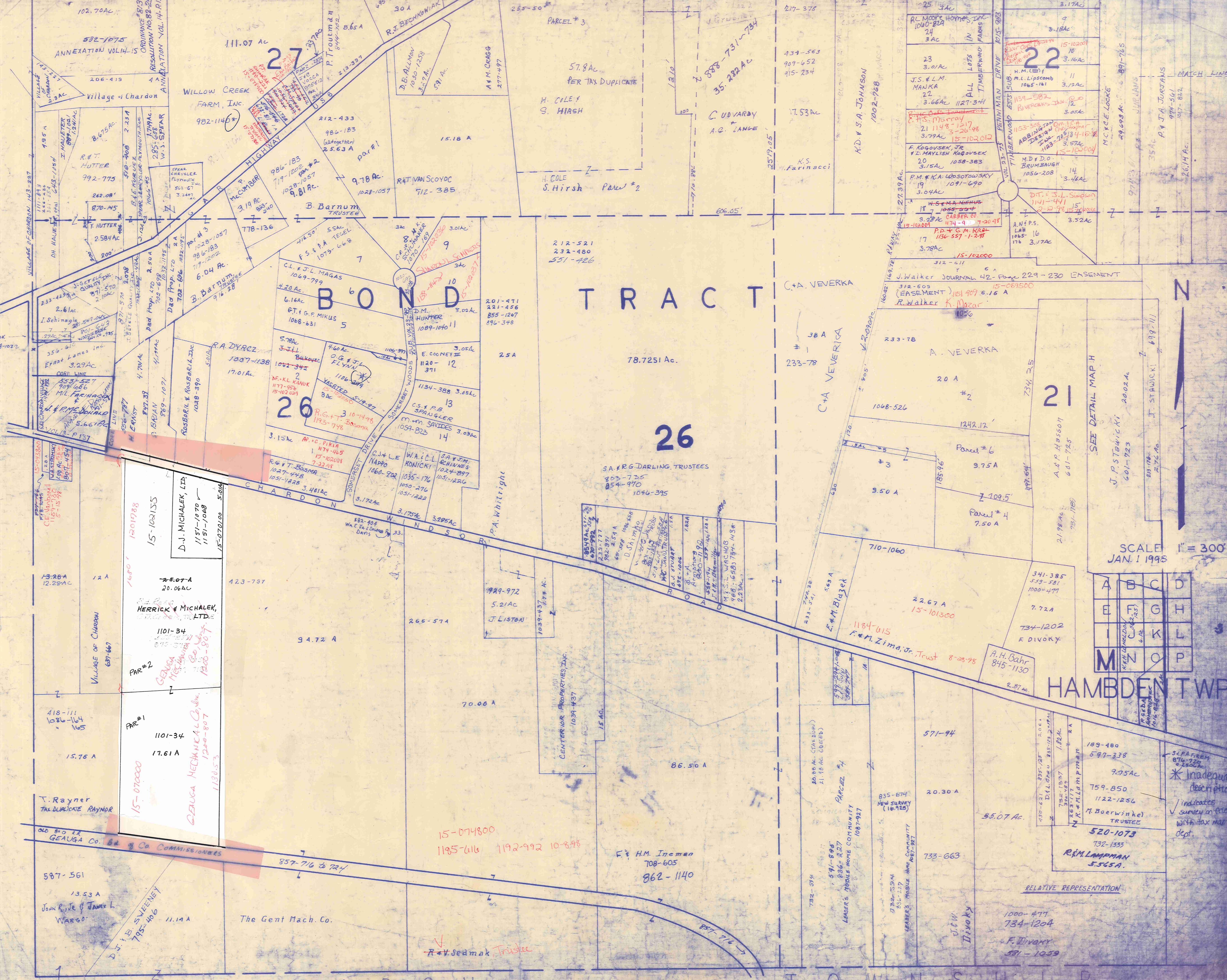
SCALE 1" = 300'  
RELATIVE REPRESENTATION

A	B	C	D
E	F	G	H
I	J	K	L
M	N	O	P

HAMBDEN TWP.  
JAN 1, 1998

\* Inadequate description  
Indicates survey on file with tax map dept.

T O W N S H I P  
C H A R D O N



# BOND TRACT

78.7251 Ac.

## 26

SCALE 1" = 300'  
JAN. 1 1998

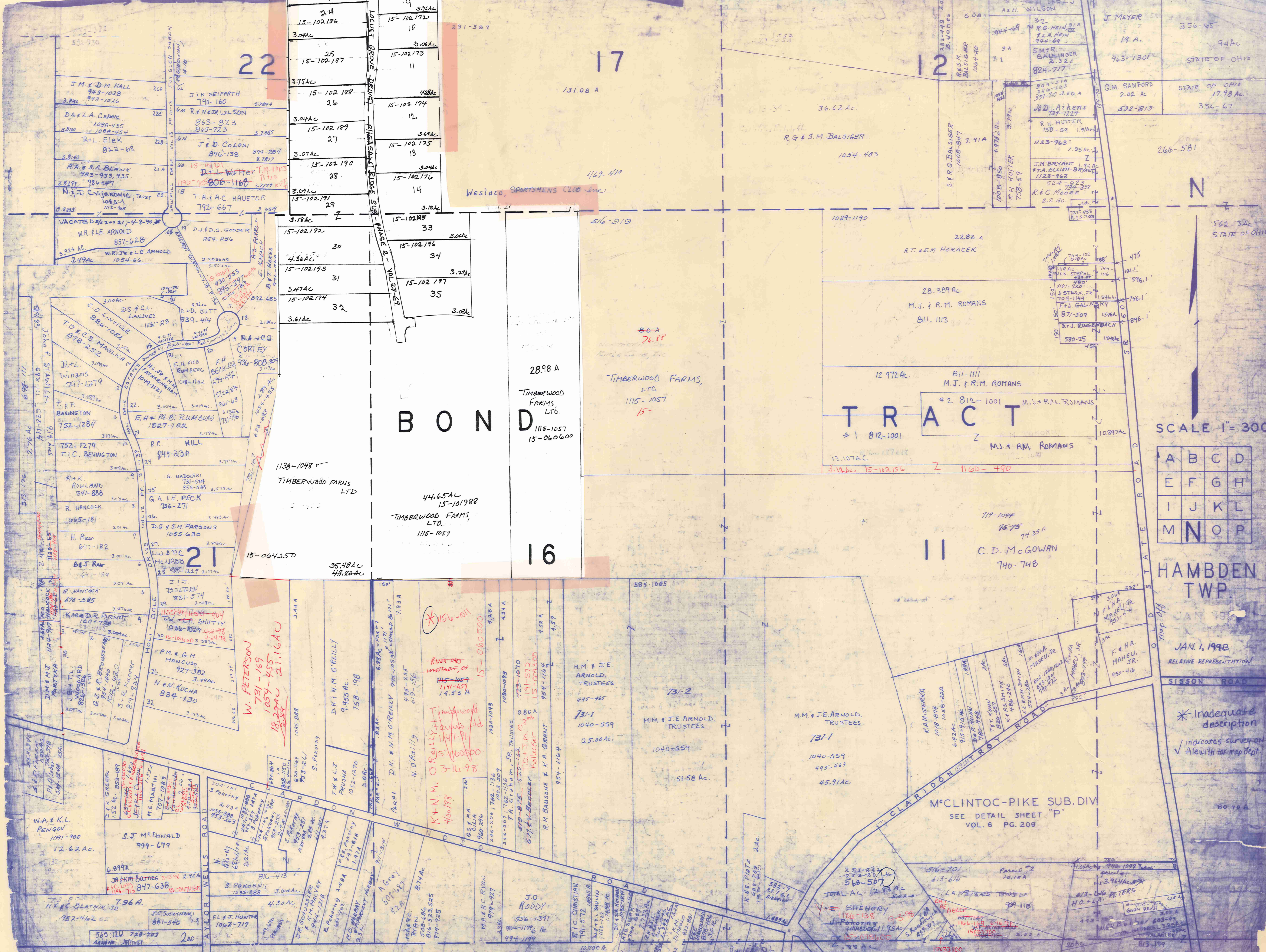
A	B	C	D
E	F	G	H
I	J	K	L
M	N	O	P

HAMBDEN TWP

RELATIVE REPRESENTATION

\* Inadequate description  
 ✓ indicates survey on file with tax map dept.

Annotations on the map include:  
 - Parcel # 3: 57.8 AC PER TAX DUPLICATE  
 - Parcel # 2: 15.18 A  
 - Parcel # 1: 78.7251 Ac.  
 - Parcel # 26: 78.7251 Ac.  
 - Parcel # 21: 20.02 Ac.  
 - Parcel # 20: 20.02 Ac.  
 - Parcel # 19: 20.02 Ac.  
 - Parcel # 18: 20.02 Ac.  
 - Parcel # 17: 20.02 Ac.  
 - Parcel # 16: 20.02 Ac.  
 - Parcel # 15: 20.02 Ac.  
 - Parcel # 14: 20.02 Ac.  
 - Parcel # 13: 20.02 Ac.  
 - Parcel # 12: 20.02 Ac.  
 - Parcel # 11: 20.02 Ac.  
 - Parcel # 10: 20.02 Ac.  
 - Parcel # 9: 20.02 Ac.  
 - Parcel # 8: 20.02 Ac.  
 - Parcel # 7: 20.02 Ac.  
 - Parcel # 6: 20.02 Ac.  
 - Parcel # 5: 20.02 Ac.  
 - Parcel # 4: 20.02 Ac.  
 - Parcel # 3: 20.02 Ac.  
 - Parcel # 2: 20.02 Ac.  
 - Parcel # 1: 20.02 Ac.



22

17

12

BOND

16

11

SCALE 1" = 300'

HAMB DEN TWP.

JAN. 1, 1998

RELATIVE REPRESENTATION

\* Inadequate description

indicates survey on file with tax map dept.

24  
15-102186  
3.07AC

25  
15-102187  
3.75AC

26  
15-102188  
3.04AC

27  
15-102189  
3.07AC

28  
15-102190  
3.09AC

29  
15-102191  
3.18AC

30  
15-102192  
4.36AC

31  
15-102193  
3.47AC

32  
15-102194  
3.61AC

9  
376AC  
15-102172  
10

11  
428AC  
15-102173

12  
3.69AC  
15-102174

13  
3.04AC  
15-102175

14  
3.12AC  
15-102176

15  
3.04AC  
15-102177

16  
3.12AC  
15-102178

17  
3.04AC  
15-102179

18  
3.04AC  
15-102180

19  
3.04AC  
15-102181

20  
3.04AC  
15-102182

21  
3.04AC  
15-102183

22  
3.04AC  
15-102184

23  
3.04AC  
15-102185

24  
3.04AC  
15-102186

25  
3.04AC  
15-102187

26  
3.04AC  
15-102188

27  
3.04AC  
15-102189

28  
3.04AC  
15-102190

29  
3.04AC  
15-102191

30  
3.04AC  
15-102192

31  
3.04AC  
15-102193

32  
3.04AC  
15-102194

28.8 A  
TIMBERWOOD FARMS, LTD.  
1115-1057  
15-060600

44.65A  
15-101988  
TIMBERWOOD FARMS, LTD.  
1115-1057

35.48A  
48.83A  
15-064350  
TIMBERWOOD FARMS LTD

W. PETERSON  
731-169  
1054-455  
18, 22, 24, 26, 28, 30, 32

156-011  
River only  
Wetlands, etc  
1155-1057  
1141-697  
14.55A

15-060500  
1030-093  
723-1070  
1191-572  
15-009300  
6174-Broadway  
Kollercker  
11/17-91  
3-16-98  
K+N.M.  
4/30/78

M.M. & J.E. ARNOLD, TRUSTEES  
495-445  
131-1  
1040-559  
25.00AC.

M.M. & J.E. ARNOLD, TRUSTEES  
731-1  
1040-559  
495-443  
45.91AC.

M'CLINTOC-PIKE SUB. DIV.  
SEE DETAIL SHEET "P"  
VOL. 6 PG. 209

W.A. & K.L. PENGON  
1091-900  
12.62 AC.

S.J. McDONALD  
999-679  
6.899A

H.F. & C. BLATNIK, JR.  
796A  
952-462 65

J.C. SUSTANSKI  
881-546  
2 AC

FL. J. HUNTER  
1062-719  
4.50 AC

D.R. SCHUBERT  
F.K.M. HARVEY  
574-1218  
4.50 AC

A. GREY  
501-144  
874 AC

M.A. R.C. RYAN  
994-179  
2 AC

J.O. ROODY  
556-1311  
904-1176  
994-179

R.P.C. CHRISTIAN  
791-572  
1172-127  
1172-127

K.S. PLITZ  
780-510  
2 AC

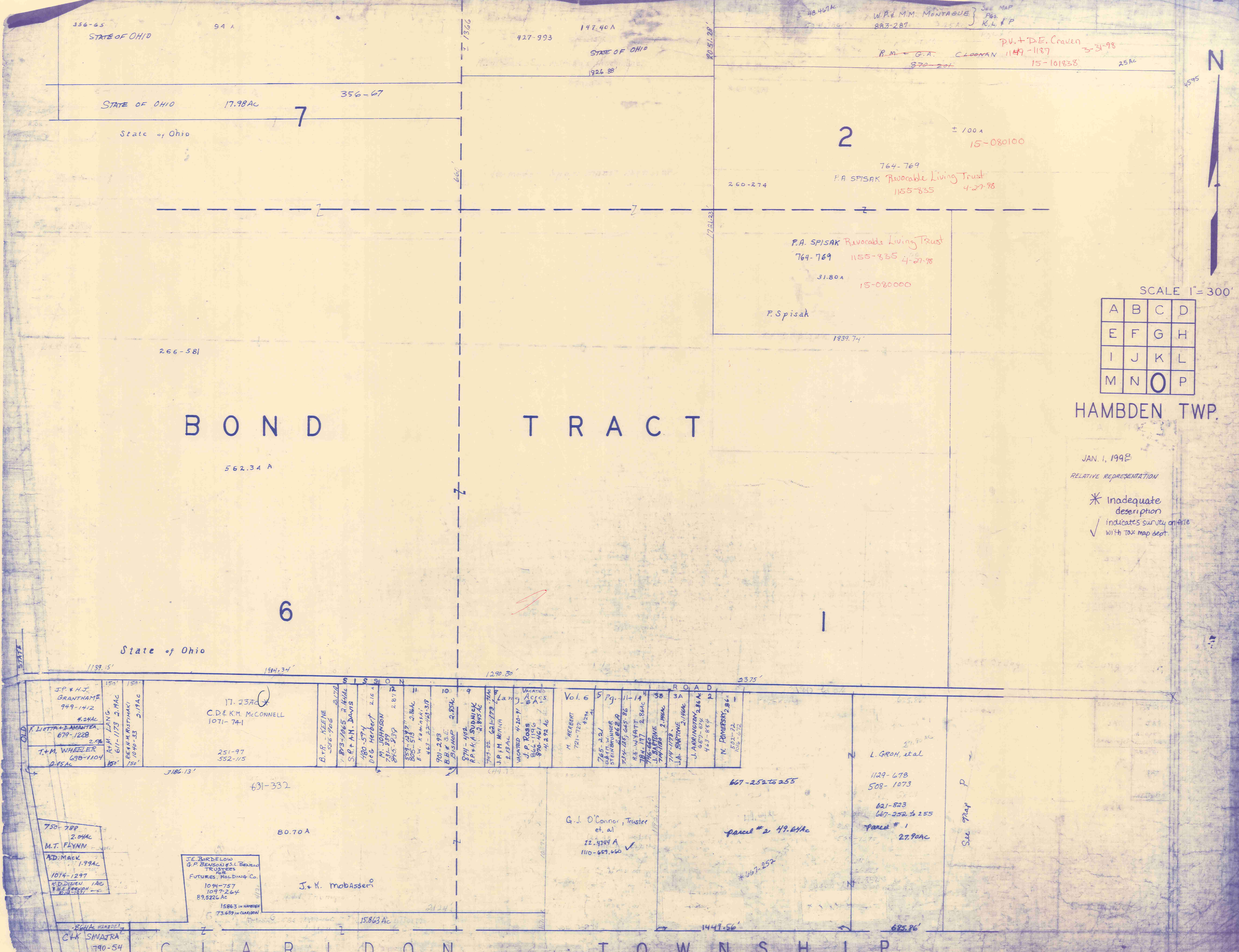
E. SHEHORY  
1170-138  
923 AC

LA. PETERS TRUSTEE  
994-118

H.O. PETERS  
813-159

H.O. PETERS  
813-159

813-159



356-65  
STATE OF OHIO

94 A

427-993

147.40 A  
STATE OF OHIO

48.467 AC  
W.P. & M.M. MONTAGUE } See MAP  
883-287 } Pgs. R, L, P

R.M. & G.A. CLOONAN } P.V. + D.E. Craven } 5-31-98  
870-201 } 1149-1187 } 15-101838 } 25 AC

STATE OF OHIO 17.98 AC

356-67

State of Ohio

2

± 100 A  
15-080100

764-769  
P.A. SPISAK Revocable Living Trust  
1155-835 4-27-98

P.A. SPISAK Revocable Living Trust  
764-769 1155-835 4-27-98

31.80 A  
15-080000

P. Spisak

1839.74'

266-581

BOND TRACT

562.34 A

6

State of Ohio

1139.15'

1984.34'

1290.80'

2375'

J.P. & H.J. GRANTHAM  
949-1412  
8.24 AC

F. LIOTTA & DAMIANITA  
679-1228  
2.04 AC

T.M. WHEELER  
690-1104  
2.45 AC

750-789  
2.04 AC  
M.T. FLYNN

AD. MACK  
1.99 AC  
1014-1297  
K.D. DIEHL  
1 AC  
W.E. REINHOLD  
0.44 AC

17.23 AC  
C.D. & K.M. McCONNELL  
1071-741

251-97  
552-115

3186.13'

631-332

80.70 A

J.K. Mobasser

J.E. BORDELOW  
& P. BENSON & S.L. BENSON  
TRUSTEES  
FUTURES HOLDING CO.  
1094-757  
1097-264  
89,522 AC

15863 IN HAMDEN  
73,659 IN CLARIDON

15.863 AC

CLARIDON TOWNSHIP

SCALE 1" = 300'

A	B	C	D
E	F	G	H
I	J	K	L
M	N	O	P

HAMBDEN TWP.

JAN. 1, 1998  
RELATIVE REPRESENTATION

\* Inadequate description  
✓ indicates survey on file with tax map dept.

G.J. O'Connor, Trustee et al  
22.4749 A  
110-669,660 ✓

667-252 to 255

parcel # 2 49.64 AC

\* 667-252

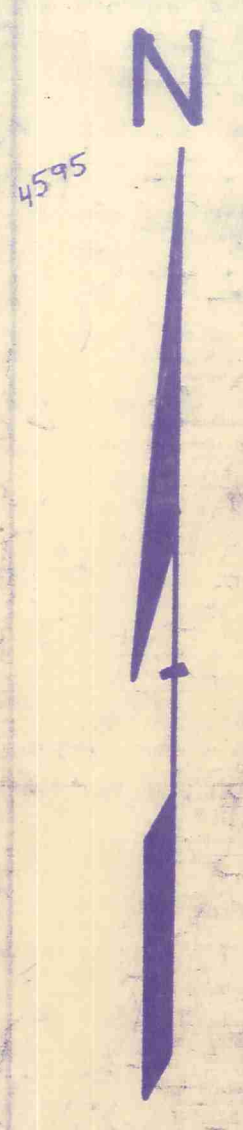
L. GROH, et al

1129-678  
508-1073

621-823  
667-252 to 255

parcel # 1  
27.90 AC

See Map P





HAMB DEN 1888



SCALE 1 in. = 25 ch. or 165 ft.

LOT 18  
HAMB DEN TWP.  
HAMB DEN CENTER  
DETAIL SHEET 9 C 12

RELATIVE REPRESENTATION

JANUARY 1, 1993

\* Inadequate description indicates survey on A10 with tax map dept

U.S. 6

15-040700 4Ac.  
C.E. & C.S. STRAZINSKY  
C.E. & G.A. SHANOWER  
1091-446  
1091-448  
11-21-93  
C.E. & T.L. King  
1301-290

C.W. & B.A. CLEMSON  
141-63 AC 734-335

LOT 18

U.S. 6

M.S. CLEMSON  
821-982

R.A. McHEARD  
811-976

S. CLEMSON  
870-9853 AC  
1039-263  
A53-2-6A

M.S. CLEMSON  
821-982

JIM HOUSEK  
850-6  
D.K. DAVIS  
556-1308

HAMB DEN CEMETERY  
TRUSTEES OF  
15-96-182  
722-1286  
R. Friedl

HAMB DEN TWP. TRUSTEES  
854-296

HAMB DEN TWP. TRUSTEES  
854-296

HAMB DEN CONGREGATIONAL CHURCH  
568-109

G. RENNEY  
258-438

F.M. PROSSER  
699-394  
1100-524

J.E. SANDERSON  
305A

H.H. COLE  
1067-093

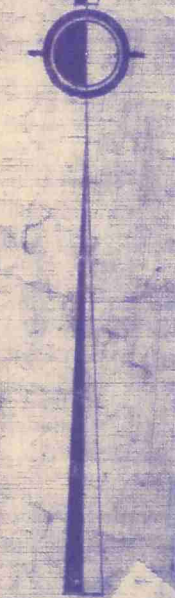
D.E. REEDS  
611-260

R.E. REEDS  
602-502

F.E. & N. LARK  
458-266  
326-608

R.M. & R.M. GREGORIC  
1120-842

U.S. 6



U.S. 6

U.S. 6

U.S. 6

U.S. 6

U.S. 6

U.S. 6

U.S. 6

U.S. 6

U.S. 6

U.S. 6

U.S. 6